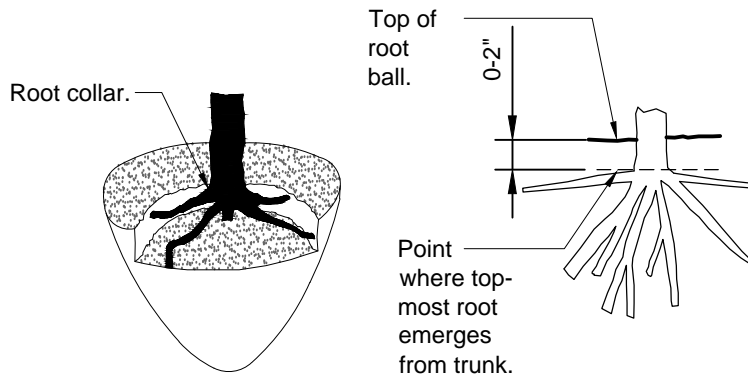
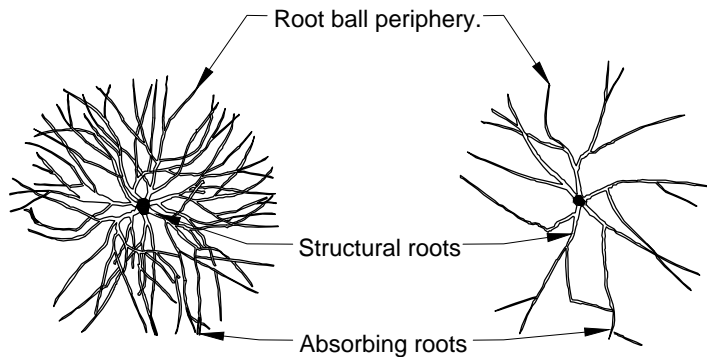


ACCEPTABLE

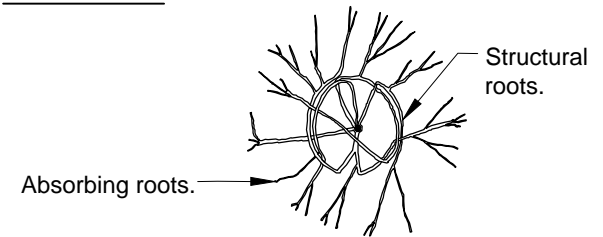
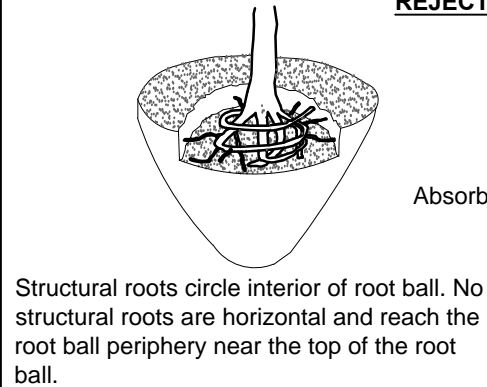


The point where top-most root(s) emerges from the trunk (root collar) should be within the top 2" of substrate. The root collar and the root ball interior should be free of defects including circling, kinked, ascending, and stem girdling roots. Structural roots shall reach the periphery near the top of the root ball.

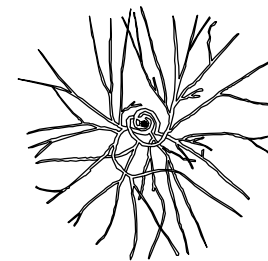
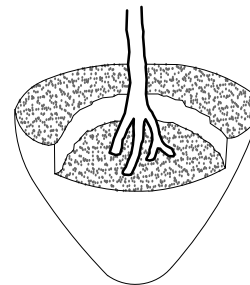


Roots radiate from trunk and reach side of root ball without defecting down or around.

REJECTABLE

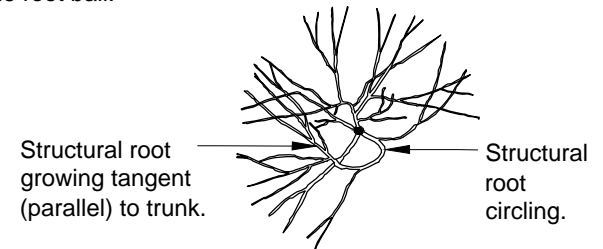
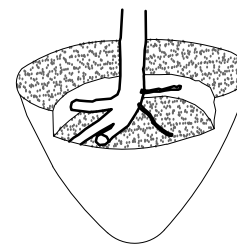


Only absorbing roots reach the periphery near the top of the root ball. Structural roots mostly wrap or are deflected on the root ball interior.



Structural roots descend into root ball interior. No structural roots are horizontal and reach the root ball periphery near the top of the root ball.

Structural roots circle and do not radiate from the trunk.



Structural roots primarily grow to one side.

Structural roots missing from one side, and/or grow tangent to trunk.

Notes:

1- Observations of roots shall occur prior to acceptance. Roots and soil may be removed during the observation process; substrate/soil shall be replaced after the observations have been completed.

2- See specifications for observation process and requirements.

URBAN TREE FOUNDATION © 2014
OPEN SOURCE FREE TO USE



ROOT OBSERVATIONS DETAIL - BALLED AND BURLAPPED